



COMPANY PROFILE

NAME – SWAJAN INDUSTRIES PVT.LTD

GST NO. 27ABACS7584D1Z5

MAIL ID – info@swajanindustries.in
yogesh@swajanindustries.in
swajan.md@gmail.com

URL - www.swajanindustries.in

FACTORY AREA - 15,000 Sq ft.

ADDRESS – Plot No- 6&7,Gat no 1559, shelar wasti,Chikhali Pune-412114
(In front of Bharat Weighbridge)

ABOUT US

SWAJAN INDUSTRIES PRIVATE LIMITED, ESTABLISHED IN SEPTEMBER 2018. LOCATED AT PLOT NO- 6&7, Gat no 1559, SHELAR WASTI, CHIKHALI PUNE-412114(In front of Bharat Weighbridge).

UNIT IS MANUFACTURE OF PRECISION MACHINING COMPONENTS REQUIRED FOR THE AUTOMOBILE INDUSTRIES AND ENGINEERING INDUSTRIES.

THE MAIN OBJECT OF COMPANY IS TO CARRY ON THE BUSINESS OF MANUFACTURING PRECISION MACHINE COMPONENT.

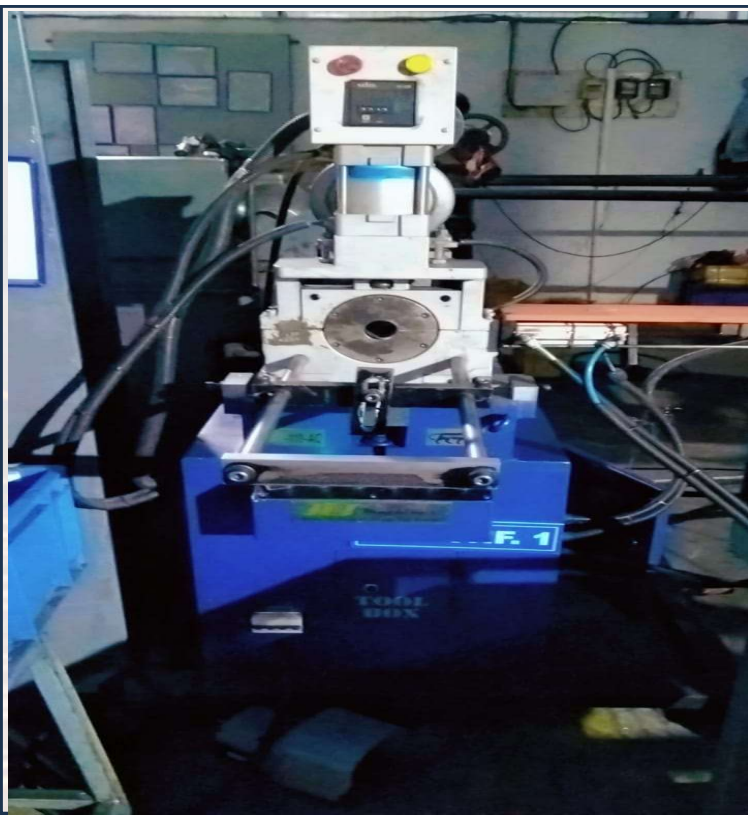
OUR INTENTIONS TO BE ASSOCIATED WITH THE CUSTOMER AND BUSINESS PARTNER FOR LONG TERM BASIS FOR THE MANUFACTURING OF PRECISION MACHINING COMPONENTS, ACCESSORIES, JIGS & FIXTURES ETC, WE ARE ALSO WILLING TO DEVELOP SOME OF THE EXPORT SUBSTITUTION COMPONENTS AS PER OVERSEAS CUSTOMER.

OUR VISION

To be the “most preferred partner” for “best in class” manufacturing service.

OUR MISSION

- **Adapt to technological changes and innovate.**
- **To offer world class products through continuous innovation**
- **To reach new sectors of industry in particular and society at large by offering products which make change in present state of machine tools.**



CHAMFER MACHINE



QUALITY AREA



RM AREA



MANUFACTURING UNIT AREA

LIST OF MACHINES

- **CNC TURNING CENTER 165 MM CHUCK MAKE LMW-(08)**
- **CNC TURNING CENTER 200 mm CHUCK MAKE LMW -(02)**
- **TRAUB MACHINE DIA 60 MM-MAKE PMT-(03)**
- **TRAUB MACHINE DIA 32-MAKE ABHIJAT-(02)**
- **TRAUB MACHINE DIA 25 MM-MAKE PMT-(01)**
- **VMC MACHINE 450 X 900 BED SIZE BFW MAKE- (1)**
- **DOUBLE END CHAMFERING MACHINE - DEF-60SS-(1)**
- **SOCO FA-111-DR Cutting machine-(2)**
- **JET JE 80AC SINGLE END CHAMFER MACHINE-(3)**
- **SAWING MACHINE WITH STAND SINGLE SOCO-(1)**
- **SHARPING MACHING -(1)**
- **Drilling Machine-(1)**

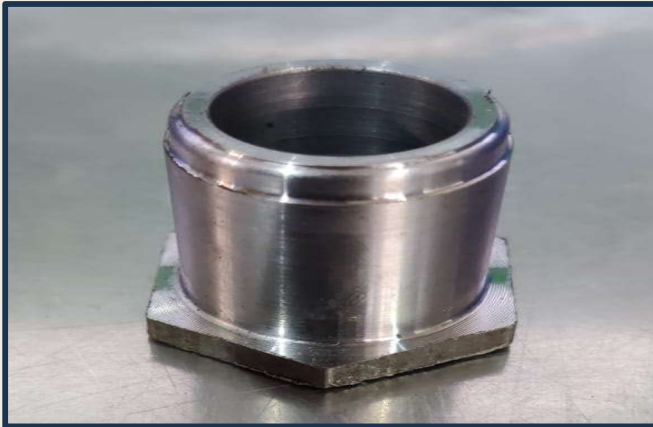
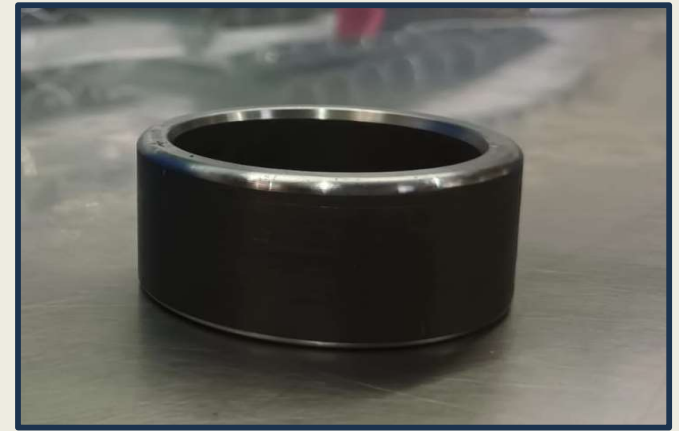
QUALITY MANAGEMENT SYSTEM

In order to meet customer requirements in terms of quality, we follow all guidelines as set out in ISO 9001-2015.

The processes and practices at Swajan Industries are designed to meet the quality standards for automobile and engineering sectors.

Further to addition, we have to plan for initiated & PLAN by March 24-25 IATF 1649-2016 standards to meet more standards of quality requirements

MS COMPONENTS



Tubular components



Aluminium casting and machined components





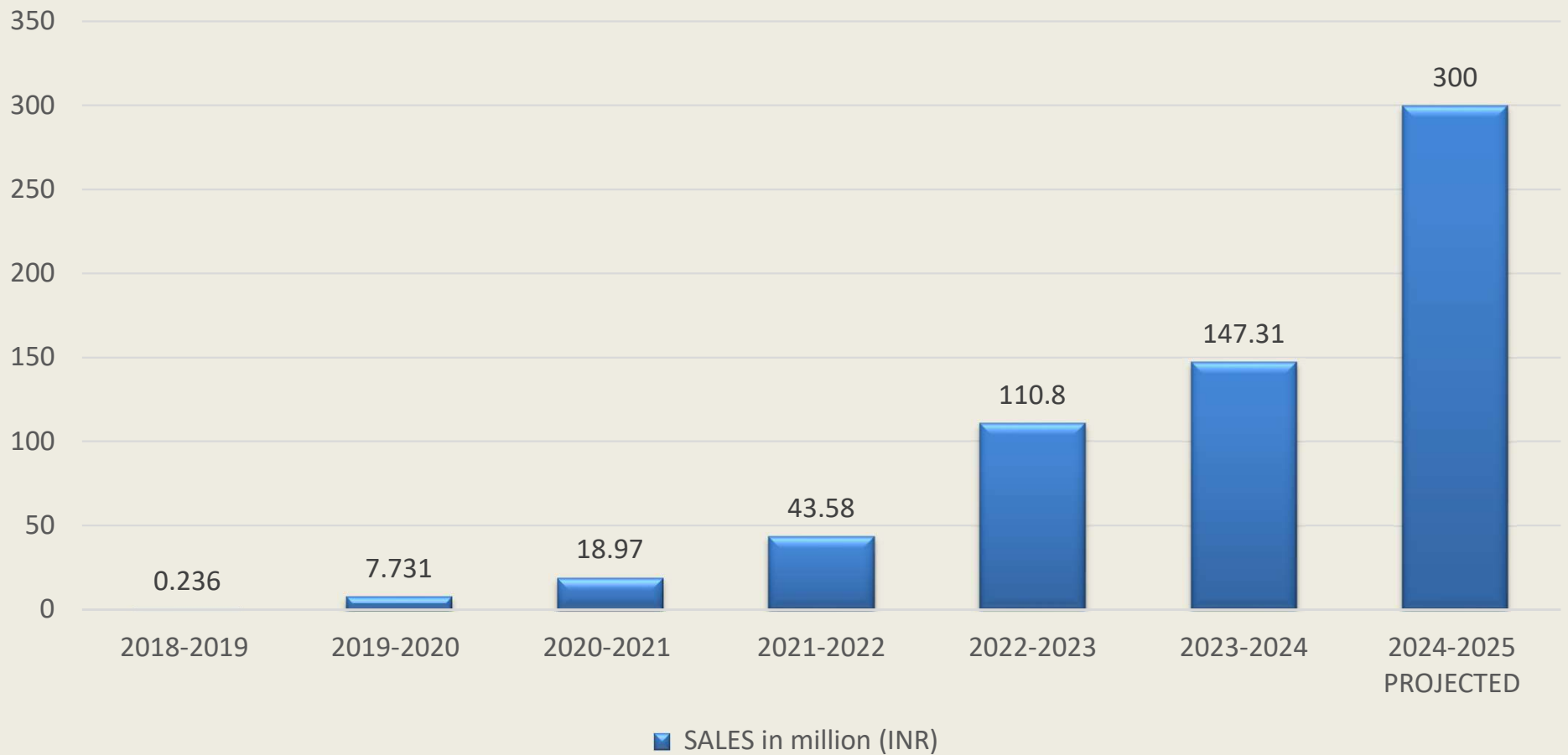
OUR VALUABLE CUSTOMERS



We are also the authorised distributor for TIMING BELTS (Contitech Belting) & BEARING (Schaffeler group)



SALES in million (INR)



Quality Certification

- ISO 9001:2015
- Import Export License
- UDYAM REGISTRATION CERTIFICATE:UDYAM-MH-26-0013229

Future Expansion & planning

- Additional manufacturing facility planning to start in Ch sambhaji nagar MS in year 2024-25 as availability of land around 45,000 sq. feet.
- Additional CNC machine-1 Nos plan in year 2024-25
- Additional Plan for Press Machine for Squeezing & Flaring operation.
- Additional VMC Machine-of 1 Plan in year 2024-25
- Additional 1Tube Cutting and 2 chamfering Machines in year 2024-25
- Additional plan for quality instrument VMM/Profile projector , Trimos Plan in year 2024-25.
- Additional plan for Genset for emergency Power Back up(DG SET)

OUR VALUES

- **Integrity - We always deliver on our promise, irrespective of constraints and time.**
- **Respect - We always respect our customers, OEMs and stakeholders and trust they have placed in us.**
- **Innovation - Finding new ways to always do better. At Swajan Industries innovation is continuous and it is achieved by sharing ideas, knowledge, skills and experience to solve our customer's needs.**
- **Excellence- Striving to be the best in everything we do. At Swajan Industries we strive to be 'best-in-class' in every aspect of our business, in manufacturing and services.**

A close-up photograph of a laser cutting machine in operation. A white robotic arm is positioned above a metal sheet, with a laser head cutting through it. A large volume of bright orange sparks is being ejected from the cut, creating a dynamic and industrial scene. The background is slightly blurred, showing more of the machine's structure.

THANK YOU !!